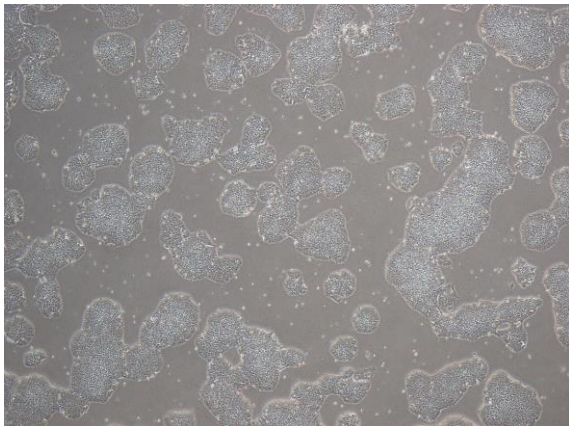
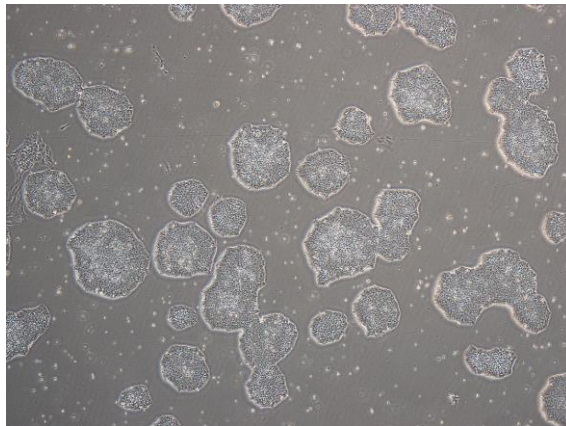


【 CiRA-j-1046 】 Morphology of iPSC colonies

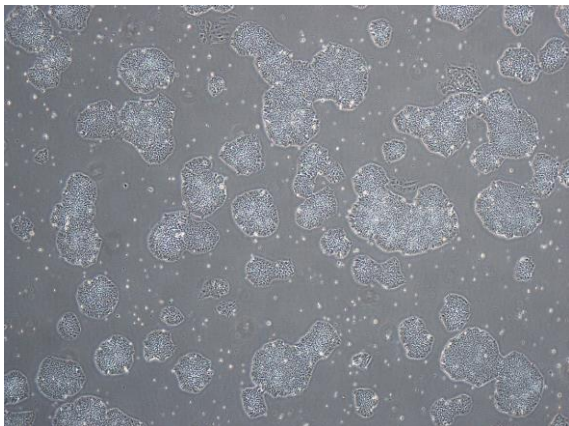
CiRA-j-1046-A: passage-2



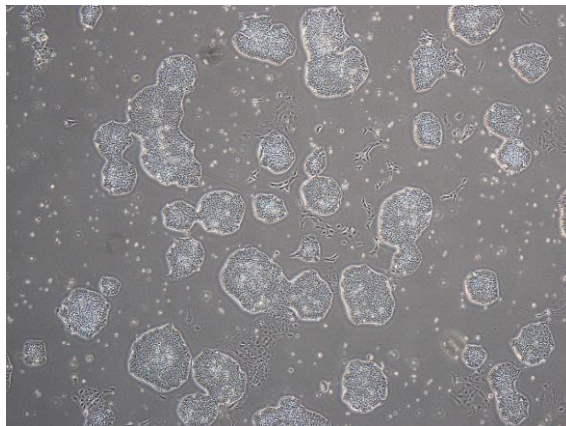
CiRA-j-1046-B: passage-2



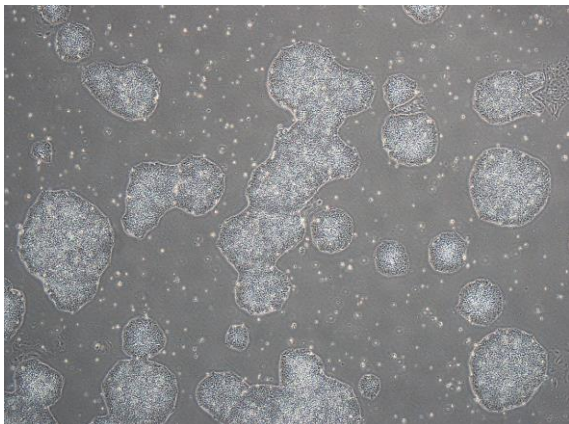
CiRA-j-1046-C: passage-2



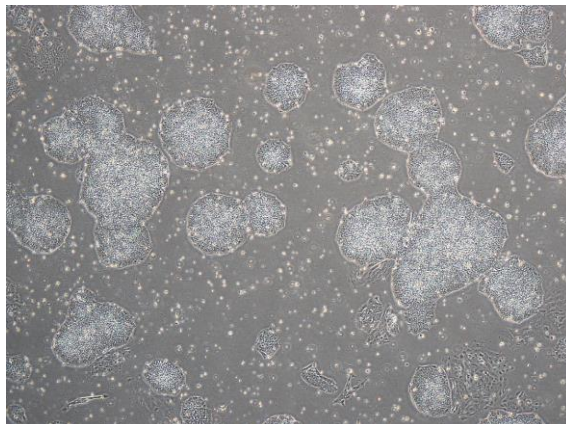
CiRA-j-1046-D: passage-2



CiRA-j-1046-E: passage-2



CiRA-j-1046-F: passage-2



(All images were captured at 4x magnification)